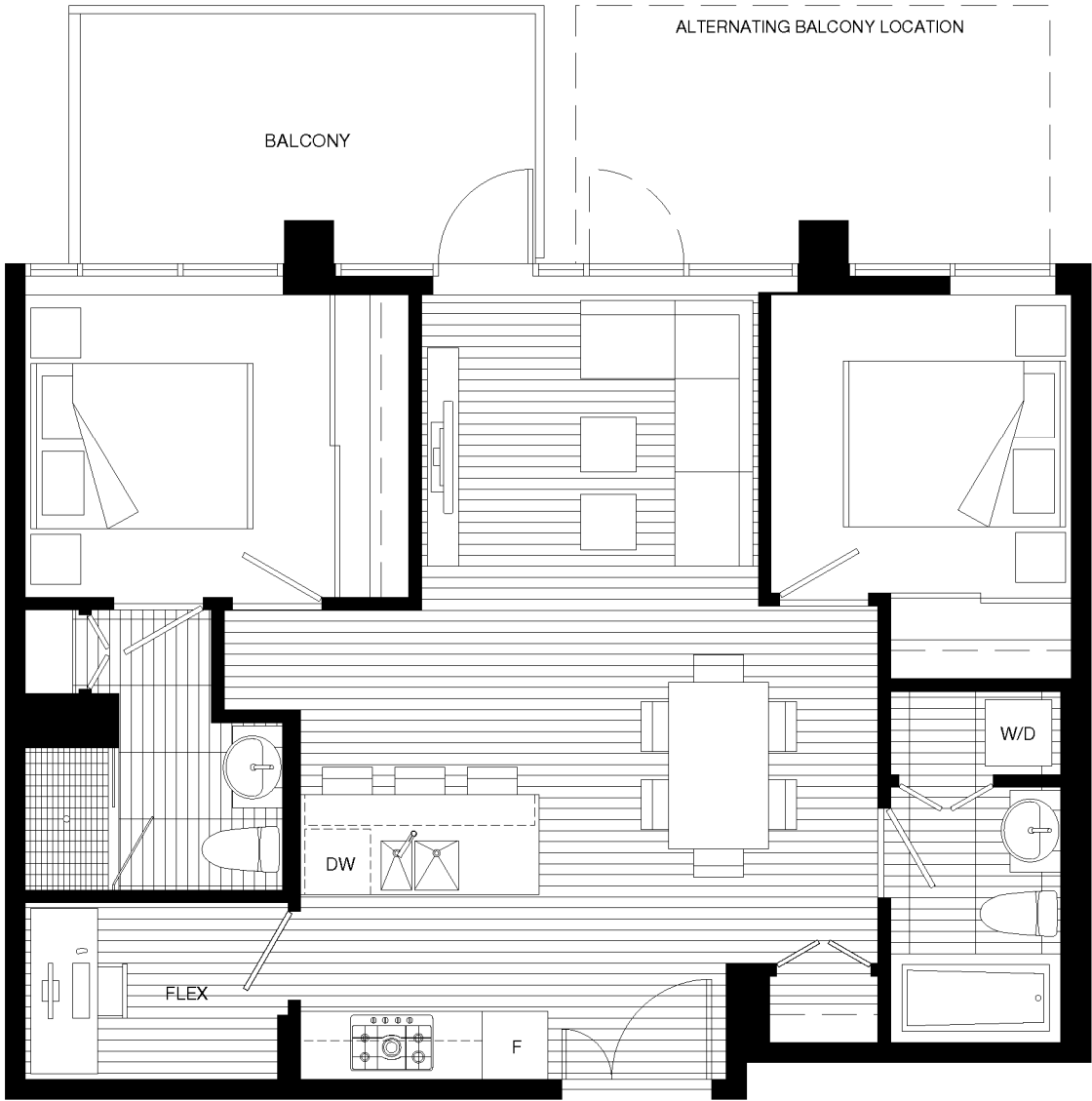




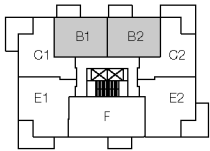
THE INTELLIGENT APPROACH TO LIVING

UNIT B1 & 2

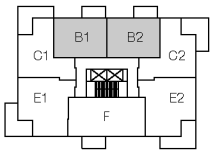
2 bed and 2 bath
783 sq ft
balcony 105 sq ft



Window configuration shown is for unit B1



LEVELS 3, 6, 8, 10 & 12



LEVELS 5, 7, 9 & 11

The developer reserves the right to make modifications to floorplans, project design, materials and specifications to maintain the high standard of this development. E.&O.E.



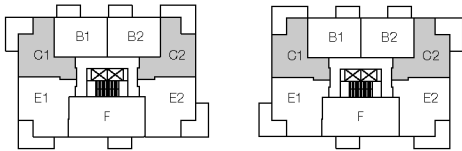
THE INTELLIGENT APPROACH TO LIVING

UNIT C1 & 2

2 bed and 2 bath
882 sq ft
balcony 261 - 264 sq ft



Window configuration shown is for unit C1



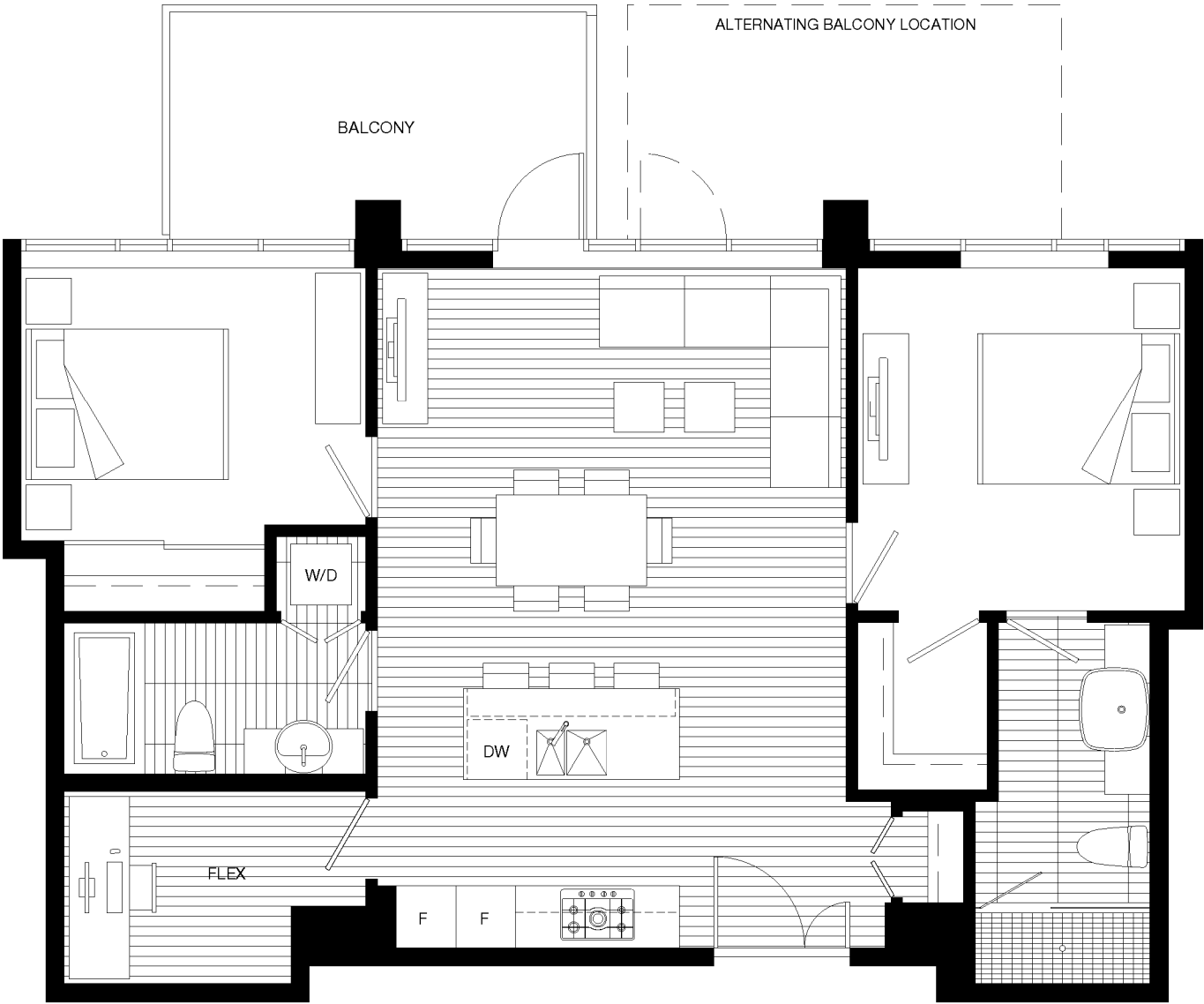
LEVELS 3, 6, 8, 10 & 12 LEVELS 5, 7, 9 & 11



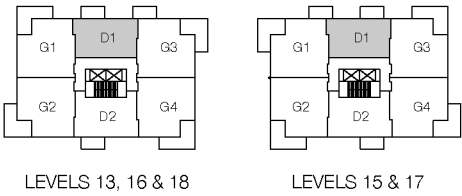
THE INTELLIGENT APPROACH TO LIVING

UNIT D1

2 bed and 2 bath
920 sq ft
balcony 105 sq ft



Window configuration shown is for levels 13, 16 and 18

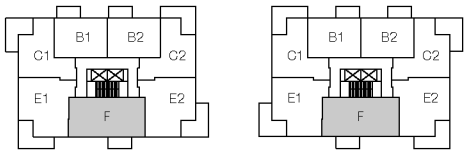
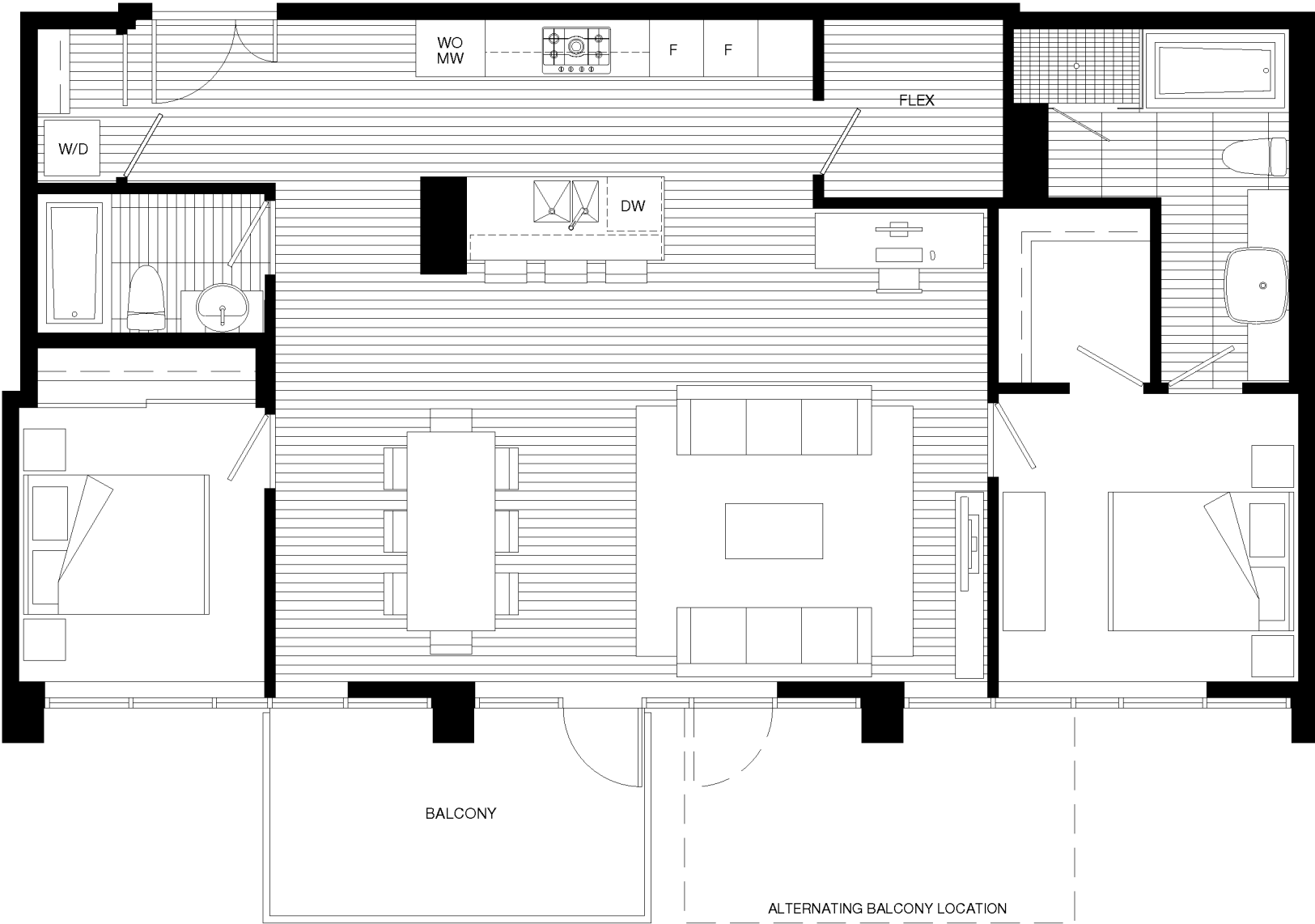




THE INTELLIGENT APPROACH TO LIVING

UNIT F

2 bed and 2 bath
1,156 sq ft
balcony 105 sq ft



LEVELS 3, 6, 8, 10 & 12

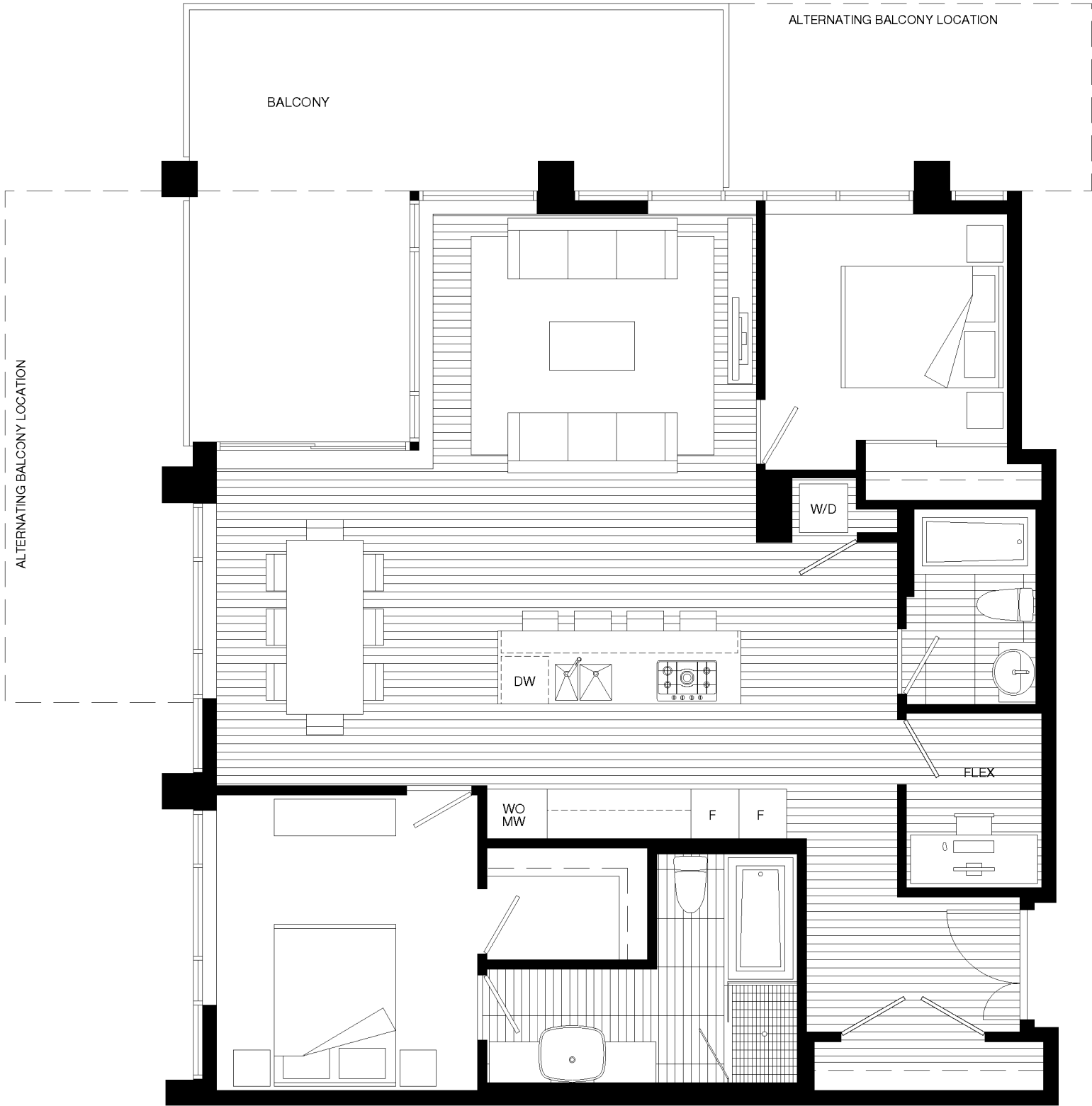
LEVELS 5, 7, 9 & 11



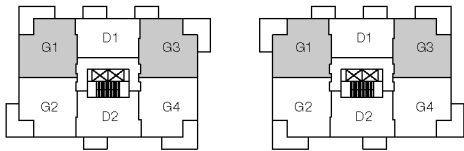
THE INTELLIGENT APPROACH TO LIVING

UNIT G1 & 3

2 bed and 2 bath
1,186 - 1,190 sq ft
balcony 264 - 369 sq ft



Window configuration shown is for unit G1



LEVELS 13, 16 & 18

LEVELS 15 & 17

The developer reserves the right to make modifications to floorplans, project design, materials and specifications to maintain the high standard of this development. E.&O.E.

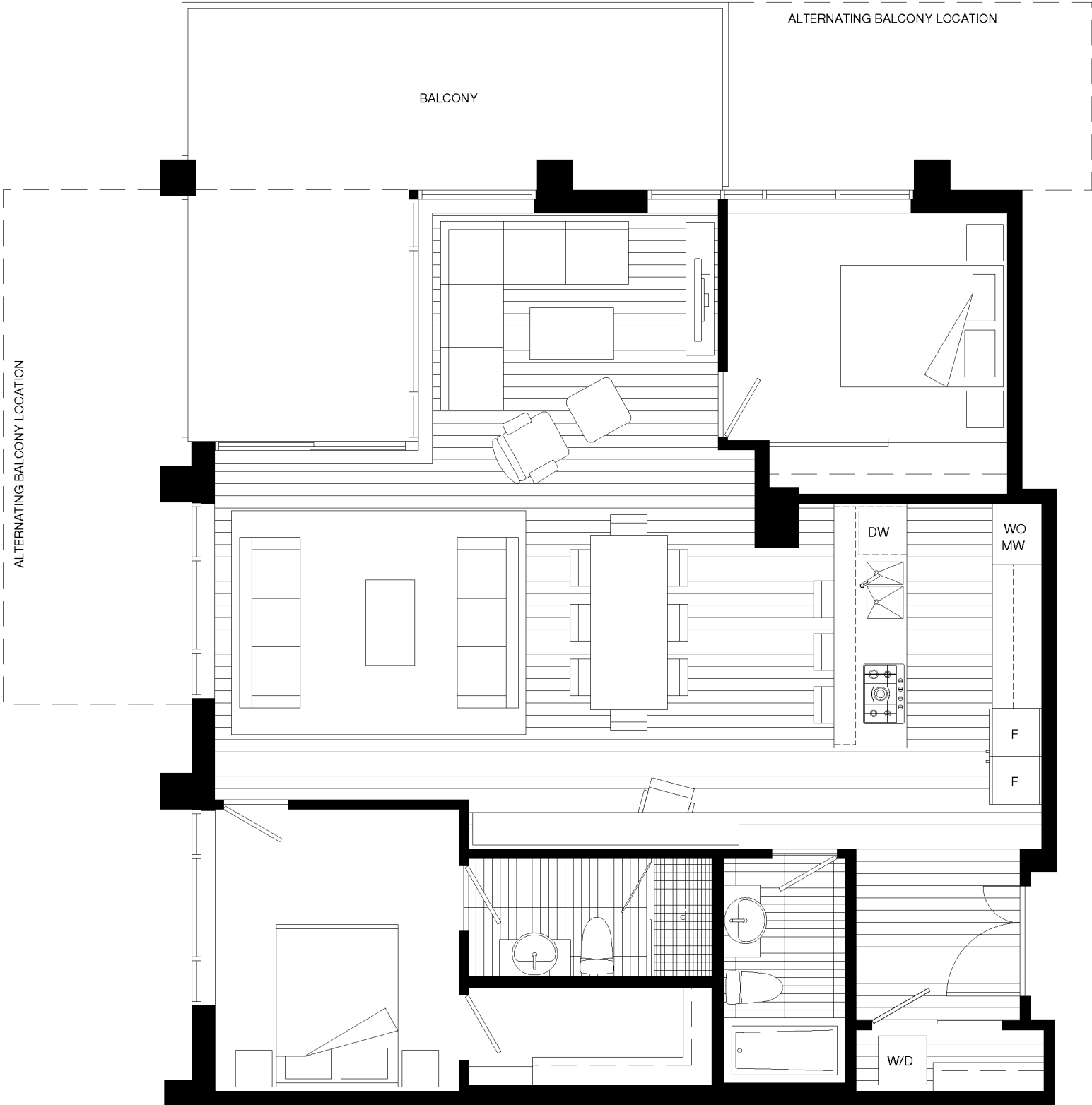




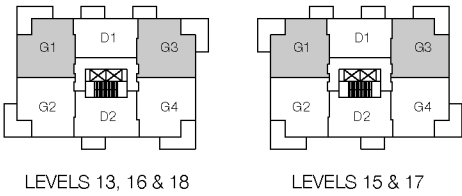
THE INTELLIGENT APPROACH TO LIVING

UNIT G1 & 3

2 bed, family, and 2 bath
1,186 - 1,190 sq ft
balcony 264 - 369 sq ft



Window configuration shown is for unit G1

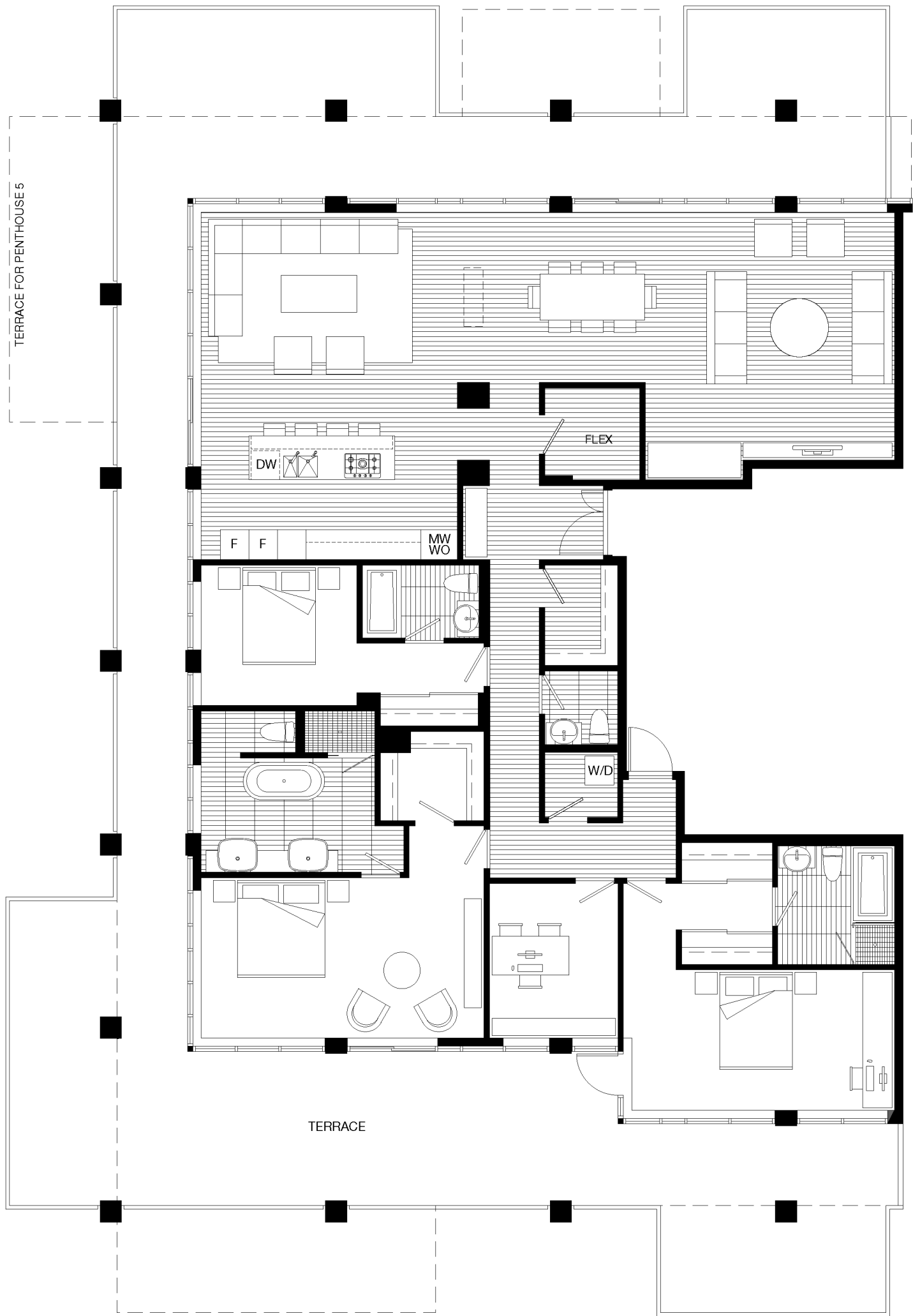




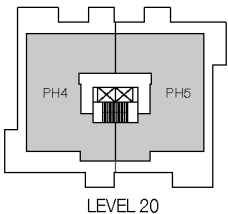
THE INTELLIGENT APPROACH TO LIVING

PENTHOUSE 4 & 5

3 bed and 3.5 bath
2,516 sq ft
terrace 1,485 - 1,570 sq ft



Window configuration shown is for Penthouse 4

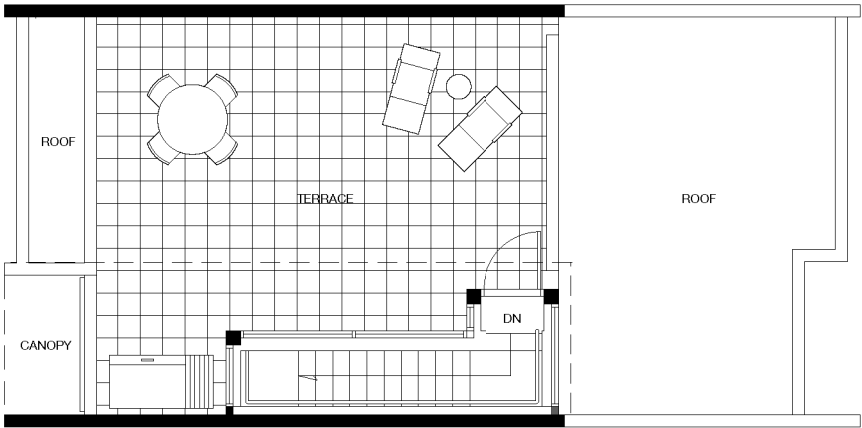




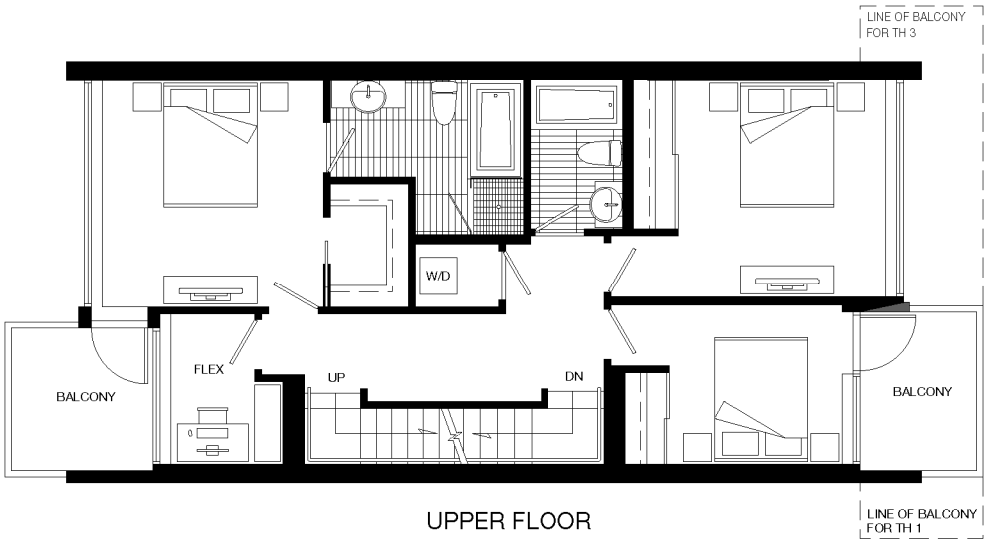
THE INTELLIGENT APPROACH TO LIVING

TOWNHOME

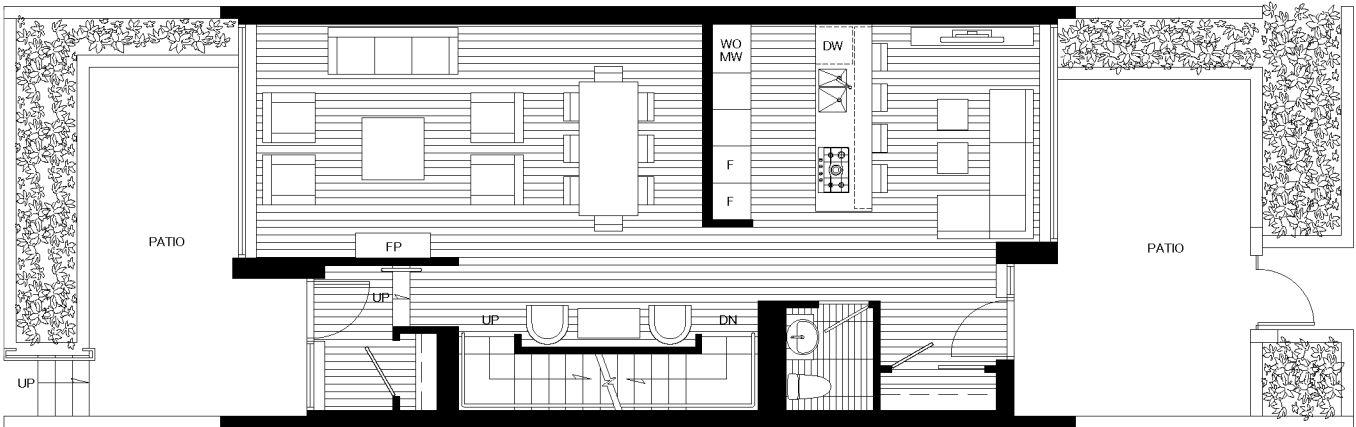
3 bed and 2.5 bath
2,389 - 2,426 sq ft
terrace 430 sq ft
patio 380 sq ft



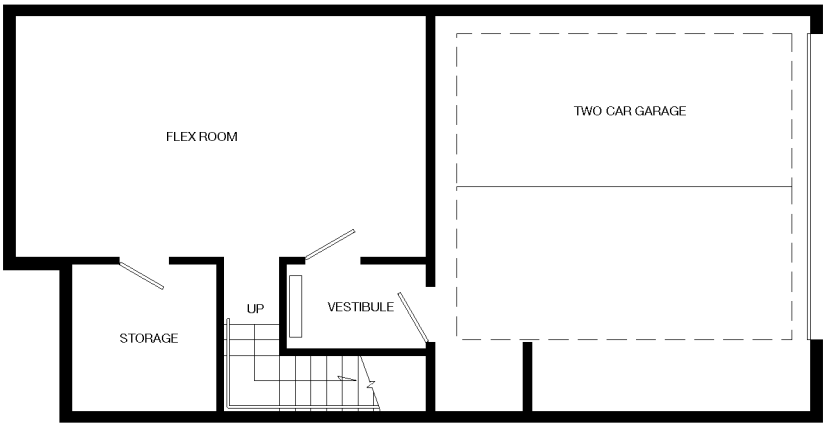
ROOF TERRACE



UPPER FLOOR



MAIN FLOOR



LOWER FLOOR